

DRAWING NUMBER
27-59

DRAWING NUMBER

DRAWING NUMBER

DRAWING NUMBER

PLAT OF PALM BEACH CABANA COLONY COMMERCIAL AREA

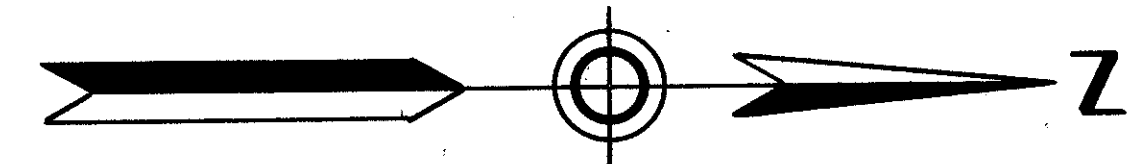
IN SECTION 31, TWP. 41 S., RGE. 43 E.
PALM BEACH COUNTY, FLORIDA

Being a Replat of Tract A, Plat No. 1, Palm Beach Cabana Colony and Tract B, Plat No. 2
Palm Beach Cabana Colony as recorded in Plat Book 26, Pages 203, 204 and 205, and Pages
238 and 239, respectively, Public Records of Palm Beach County, Florida.

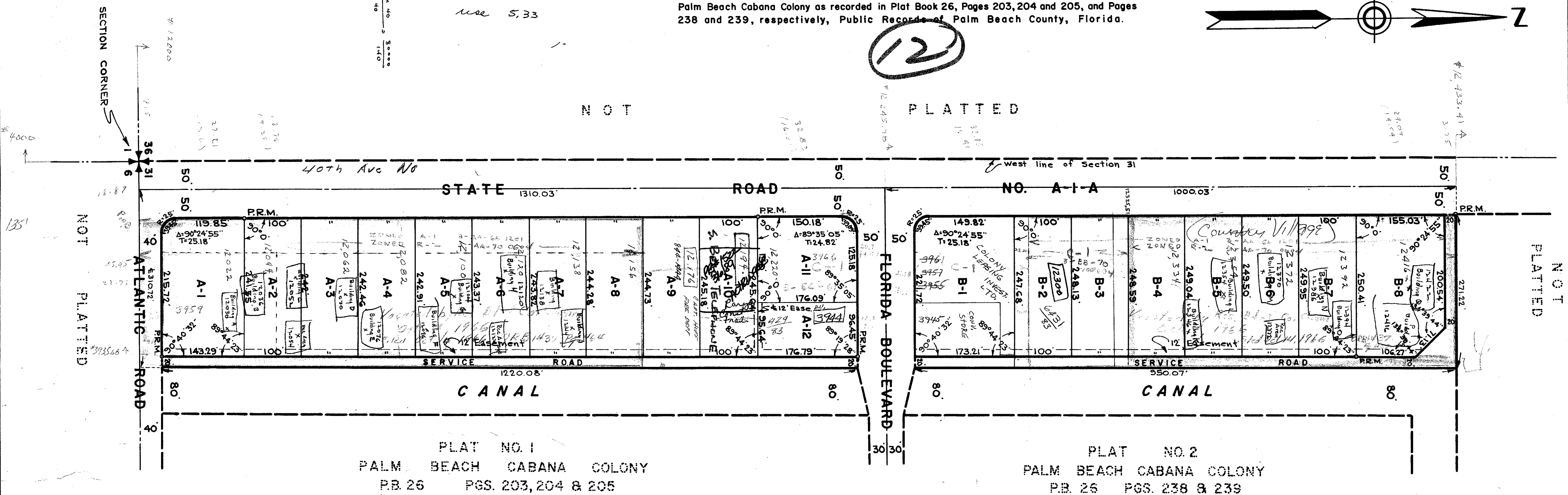
59



STATE OF FLORIDA
COUNTY OF PALM BEACH ss. 39
This Plat was filed for record at 3:39 P.M.
this 27th day of Nov.
1961, and duly recorded in Plat Book No.
27 on page 59.
J. ALEX ARNETTE, Clerk Circuit Court
By *Bertha M. Dean*, D. C.



NOT PLATTED



PLAT NO. 1
PALM BEACH CABANA COLONY
P.B. 26 PGS. 203, 204 & 205

PLAT NO. 2
PALM BEACH CABANA COLONY
P.B. 26 PGS. 238 & 239

STATE OF FLORIDA
COUNTY OF PALM BEACH ss
KNOW ALL MEN BY THESE PRESENTS, that NORTH PALM BEACH PRO-
PERTIES, INC., NATEL, INC. and CENTURY VENTURES, INC., doing business as PALM
BEACH CABANA COLONY, the owners of the tract of land lying and being in Sec-
tion 31, Township 41 South, Range 43 East, Palm Beach County, Florida, shown hereon
as PALM BEACH CABANA COLONY COMMERCIAL AREA, and more particularly de-
scribed as follows, to wit:

Tract "A", Plat No. 1, Palm Beach Cabana Colony and Tract "B", Plat No. 2, Palm
Beach Cabana Colony, according to the plats thereof recorded in Plat Book
26, Pages 203, 204, 205, and Pages 238 and 239, respectively.

have caused the same to be surveyed and platted as shown hereon, and do hereby
dedicate to the perpetual use of the public, as a public thoroughfare, the Service
Road shown hereon, and the use of the Easements for the construction and mainten-
ance of Public Utilities and/or Drainage Purposes.

IN WITNESS WHEREOF, the said Corporations doing business as PALM
BEACH CABANA COLONY has caused these presents to be signed by their Attorney-
in-Fact by and with the authority of their said Boards of Directors, this 5th day
of September, A.D. 1961

NORTH PALM BEACH PROPERTIES, INC., NATEL, INC. and CENTURY
VENTURES, INC. doing business as PALM BEACH CABANA COLONY
By: *Phil Salubade* (Seal)
As Attorney-in-Fact for said Owner under Power
of Attorney recorded in Official Record Book 637,
Page 590, Public Records of Palm Beach County, Fla.

STATE OF FLORIDA
COUNTY OF PALM BEACH ss
I HEREBY CERTIFY, that on this day personally appeared before me, an
officer duly authorized to administer oaths and take acknowledgments, JOHN A.
SCHWENCKE, Attorney-in-Fact for NORTH PALM BEACH PROPERTIES, INC., NATEL,
INC. and CENTURY VENTURES, INC. doing business as PALM BEACH CABANA COLONY,
to me well known and known to me to be the individual described in and who executed
the foregoing dedication as such Attorney-in-Fact and he acknowledged before me
that the same was executed by and with the authority of the respective Boards of
Directors of said Corporations for the purposes therein expressed and that the exe-
cution thereof was the acts and deeds of the respective Corporations.
WITNESS my hand and official seal at West Palm Beach, County of Palm
Beach and State of Florida, this 5th day of September, A.D. 1961.

John J. Flowers
Notary Public

My Commission expires: August 7, 1965

STATE OF FLORIDA
COUNTY OF PALM BEACH ss
I HEREBY CERTIFY, that the plat shown hereon is a true and correct
representation of a survey, made under my direction, of the hereon described property,
and that said survey is accurate to the best of my knowledge and belief, and that
permanent reference monuments (P.R.M.) have been placed as required by law.

Henry R. Brockway
Registered Land Surveyor
Florida Certificate No. 831

Subscribed and sworn to before me this 6th day of September, A.D. 1961

John J. Flowers
Notary Public

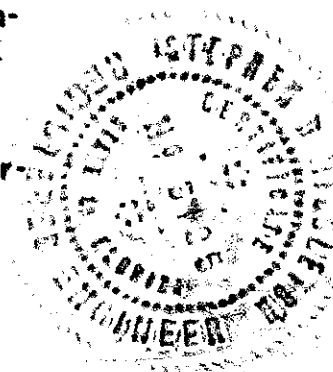
My Commission expires: August 7, 1965

NOTE
Building Setback Lines shall be as required by
Palm Beach County Zoning Regulations.
There shall be no buildings or other structures
placed on Utility Easements.
There shall be no buildings or any kind of con-
struction or trees or shrubs placed on Drain-
age Easements.
Easements are for Public Utilities, unless other-
wise noted.

Approved: OCTOBER 30, A.D. 1961
Board of County Commissioners

By: *Paul Brumby*
Chairman

By: *Stephen M. Smith*
County Engineer



1000-281 27-59

BROCKWAY, WEBER & BROCKWAY
ENGINEERS, INCORPORATED
WEST PALM BEACH, FLORIDA

31 41 43
PALM BEACH CABANA COLONY COMMERCIAL AREA

FIELD:	SCALE: 1" = 100'	Dwg. No.
OFFICE: J.J.F.	DATE: JULY 1961	Job No.
DR. BY: M.G.B.		
BK. R-109 Pg. 74		

HC-37